

# FortisBC Asset Realignment Project

## Landbase Issues



Piet Nooij  
**FortisBC**  
GIS Project Manager  
Date: September 27, 2011

# Old versus New ICIS Landbase

- When loading new landbase there will be difference between the old and the new landbase because:
  - New landbase is usually more accurate
  - Certain landbase errors have been fixed overtime by (local) governments
  - Changes in the landbase because of new developments – sub divisions, malls
  - Changes due to new road widenings, install bridges, etc.
  - Address changes and new addressing
  - Strata developments



# Conflation errors

- The impact on the conflation project depends on how much out of date the old landbase is compared to the new landbase
  - Conflation is basically a least square fit model – move points from old to new with a distance and rotation
  - The more out of date the landbase is the more challenging the conflation will be – “square peg in a round hole”
  - If we find significant errors with the conflation we will send these out for field checks
  - Before we send out these issues we research legal drawings to ensure the new ICIS cadastral landbase is correct



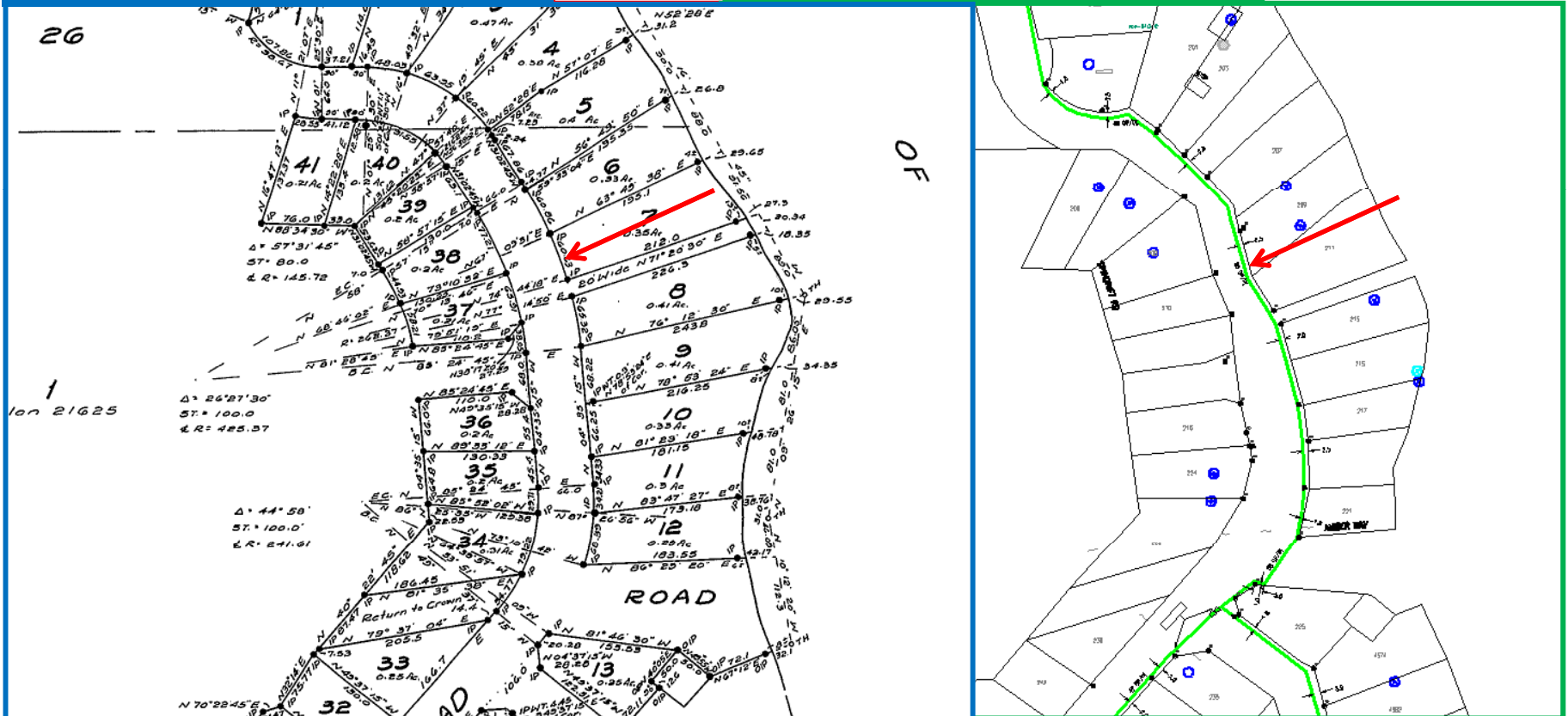


# Example #2

Road Width Issue – Width should be 20.12 m (66 ft) but is 16.75 m

Legal Drawing

After Conflation (ICIS landbase)

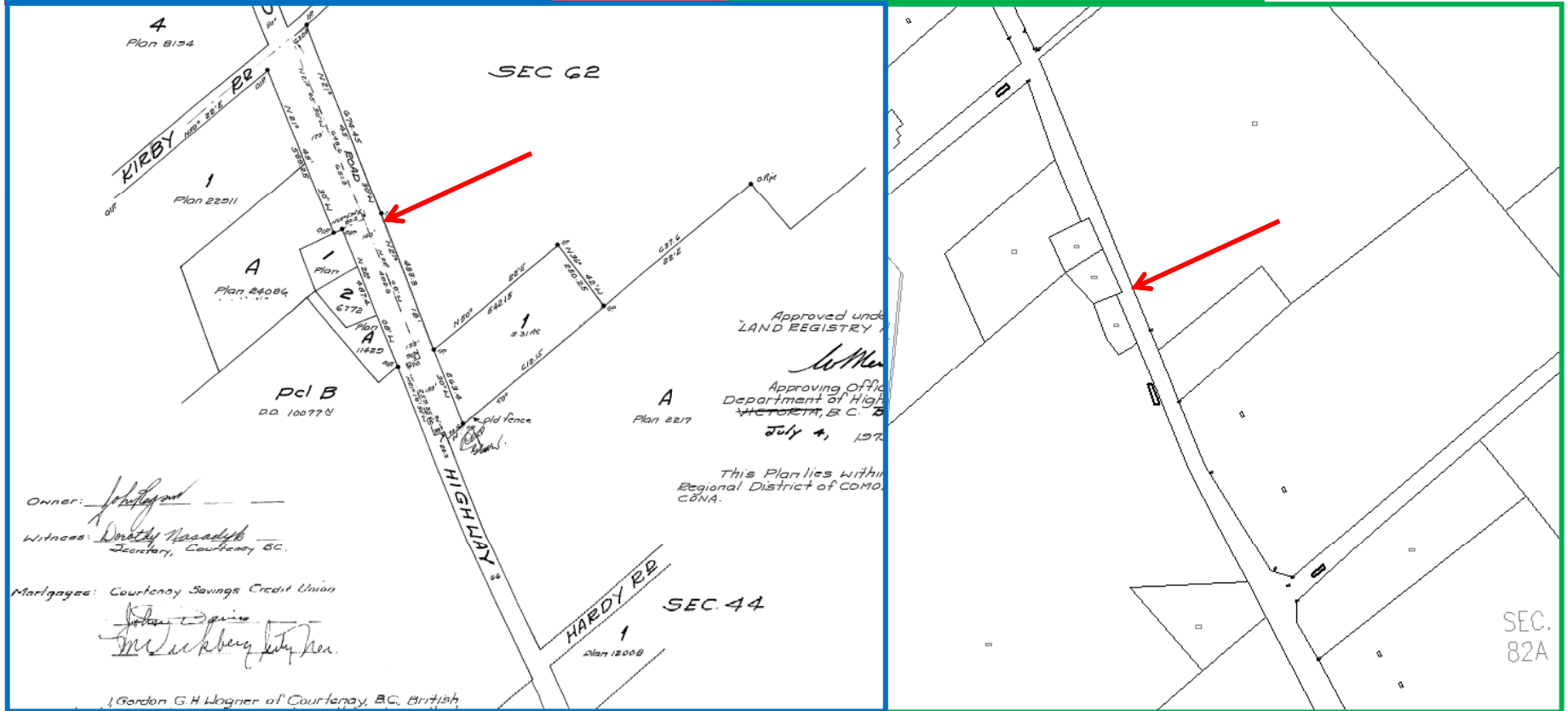


# Example #3

Road Widening Issue Island Hwy North - Old landbase is more accurate than new ICIS landbase

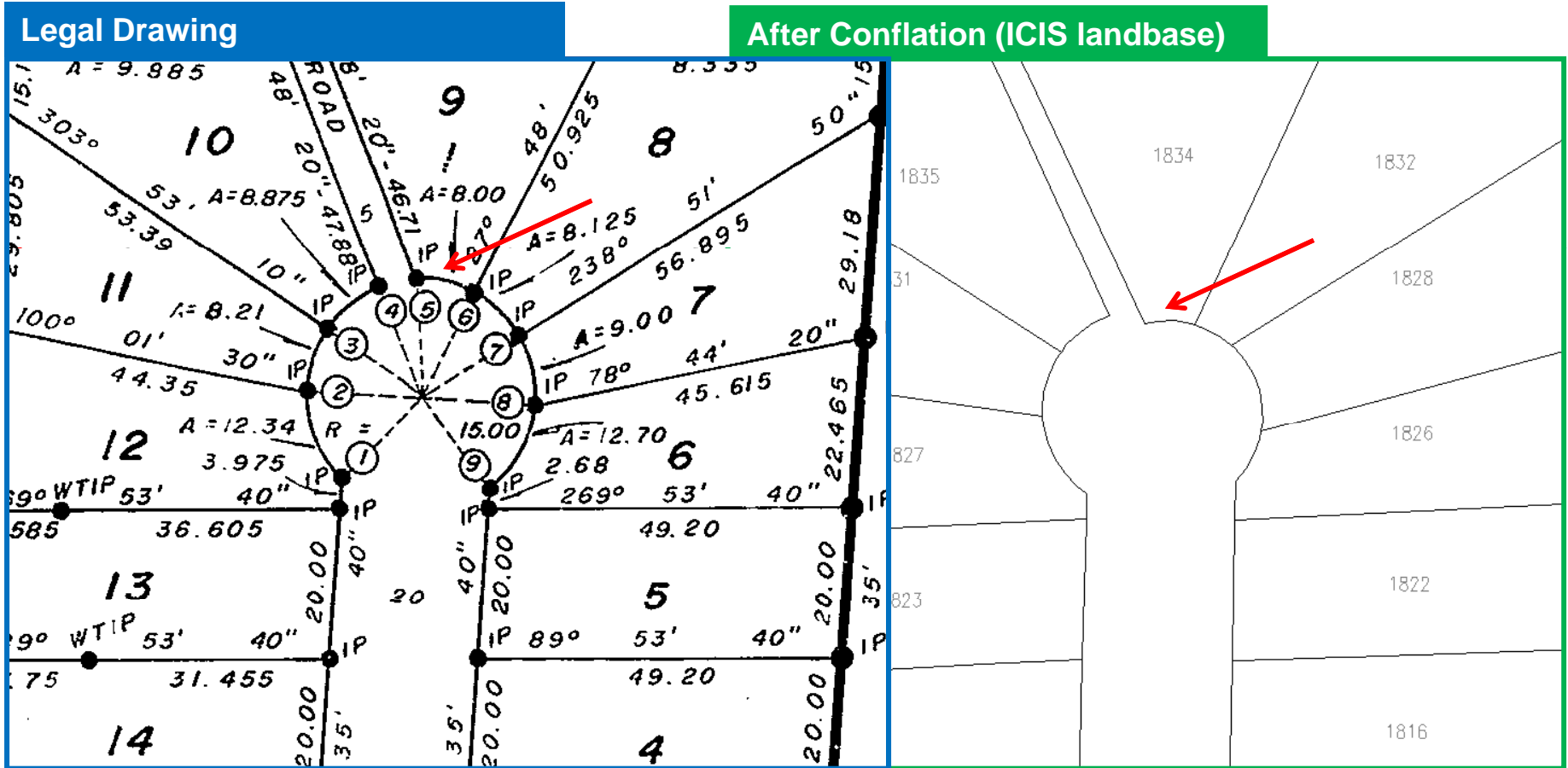
Legal Drawing

After Conflation (ICIS landbase)



# Example #4

Cul de sac - Old landbase is more accurate than new ICIS landbase



# Landbase Issues

- ICIS –
  - If we find these landbase issues we will send these to ICIS
  - ICIS will send these to the municipalities for further investigation and correction if needed
  - Next round the new accurate landbase will be loaded by FortisBC and corrections are made

