

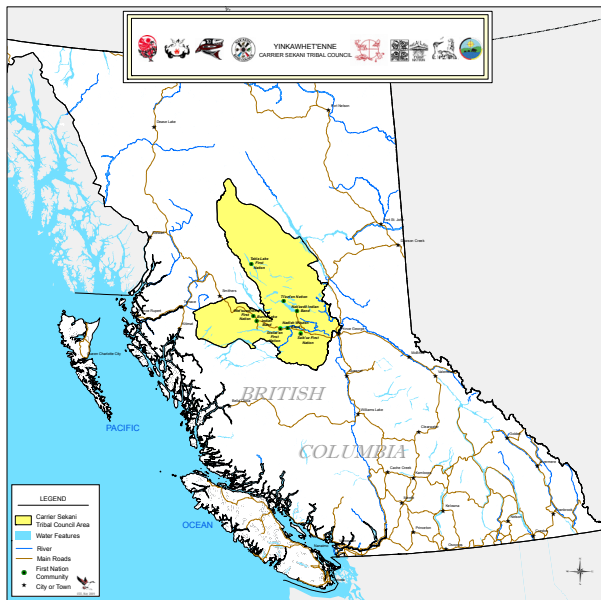


INTEGRATED  
CADASTRAL  
INFORMATION  
SOCIETY

## Carrier Sekani Tribal Council



The Carrier Sekani Tribal Council (CSTC) was created in 1982 to provide political and technical support for the Dakelh (Carrier) and Sekani First Nations. The member First Nations of the CSTC are Burns Lake Band (Ts'il Kaz Koh First Nation), Nak'azdli Band, Nadleh Whut'en First Nation, Saik'uz First Nation, Stellat'en First Nation, Takla Lake First Nation, Tl'azt'en Nation, and Wet'suwet'en First Nation. The combined population of the CSTC membership is over 10,000 people. The territories of the CSTC member First Nations is approximately 78,700 sq. kms (7.87 million hectares), amounting to 8.3% of area of BC, or twice the size of Vancouver Island and roughly the size of Ireland. This vast area is located in central British Columbia and stretches from Prince George to Houston, BC (east-west) and Ootsa Lake to Thudade Lake (south-north).



The CSTC Natural Resource Department focuses in the areas of fisheries, land use planning, natural resource management and mapping analysis. In 2007, the CSTC undertook a project (funded by GeoConnections and INAC) to develop a centralized mapping service for its member First Nations through the creation of a web-based Open Source GIS. In partnership with the Tsilhqot'in National Government and the University of Northern BC, the CSTC was able create innovative technology that addressed First Nations needs.

When compiling cadastral data for the Burns Lake area, the CSTC GIS Analyst found discrepancies in official surveyed boundary areas between the Regional District and an Indian and Northern Affairs Canada (INAC) data for Indian Reserves. Identifying the source of authoritative data was the trigger for the CSTC to join ICIS in 2008, becoming one of the first aboriginal organizations, along with Treaty 8 Tribal Association, to become members of ICIS.

ICIS now provides the authoritative cadastral datasets to the CSTC. This is a huge time saver for the CSTC and has helped them reduce the cost of acquiring authoritative datasets and correcting information that they already have from other sources. Efficiently creating maps and analysis for 20+ different Indian Reserves and a huge traditional territory was a challenge prior to becoming part of ICIS. CSTC has a small team of staff members with limited resources, and having access to a single source for cadastral data allowed CSTC to more effectively fulfill mapping requests to CSTC member First Nations.

The CSTC is planning to continue their working relationship with ICIS. They would like to improve their cadastral datasets for priority areas to address emergency planning and economic development in high population zones. Membership in ICIS has allowed CSTC staff to learn about challenges and opportunities of other governments in data and information management.

For a community who selected the goose as their symbol, the association with ICIS is a natural fit. As written in The Goose Story at [www.cstc.bc.ca](http://www.cstc.bc.ca):

*"When people share a common direction and sense of community, they can get where they are going easier and faster because they are traveling on the thrust of one another."*