

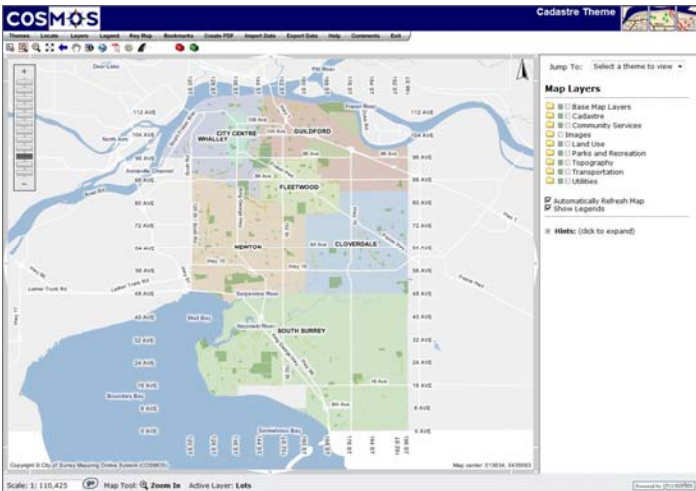


INTEGRATED  
CADASTRAL  
INFORMATION  
SOCIETY

## MEMBER PROFILE



With a population of over 462,000, the City of Surrey is one of the fastest growing major cities in Canada and has been identified as Metro Vancouver's '2<sup>nd</sup> Metropolitan core' and the Downtown for the Fraser Valley. Surrey is also the 12<sup>th</sup> largest city in Canada at 317.40 square kilometers. The city offers a rich blend of diverse landscapes, abundant parks, rich cultural opportunities and superb recreational choices.



Surrey provides a relaxed lifestyle with a mix of residential and city living combined with open country spaces. Located at the crossroads of the Pacific Rim, Metro Vancouver and the United States, Surrey is accessible to all major cities in the Lower Mainland of British Columbia. With four Translink Skytrain stations in Surrey, the bustling community is less than a 35 minute ride to and from Vancouver via public transit.

The City of Surrey encourages developers and builders to utilize its available non-agricultural land for business and industrial purposes and has streamlined development approval to maintain a high level of service to business. The 500 plus businesses which locate to Surrey each year also have access to a large and growing consumer market as well as a talented and diversified labor pool capable of supporting a wide range of business needs.

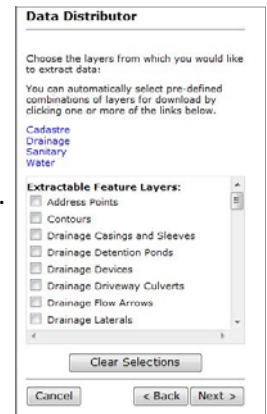
Sean Simpson is the GIS Manager with the City of Surrey. Surrey's GIS Section is staffed by twelve including GIS Analysts and Specialists, a GIS Coordinator and clerks to provide customer service. The GIS Section provides services to both internal and external clients including mapping, application development and integration services.

With the rapid growth of land development in Surrey, the GIS section was dealing with an incredible volume of data requests, in particular from the major utilities. "The huge demand resulted in an onerous strain on the GIS Section," says Sean Simpson, GIS Manager. "This prompted my predecessor to seek a solution – eventually, identifying ICIS as a resource and becoming a member."

ICIS was incorporated as a non-profit society in 2001 and added the City of Surrey as a founding partner in 2003. ICIS is a partnership of British Columbia's major utilities, provincial government ministries, crown corporations and local governments. The Society was established specifically for the purpose of developing, maintaining and sharing a province-wide cadastral fabric and other related data sets for the use of the Society's members.

Prior to becoming part of ICIS, Surrey's GIS Section had to provide constant land and underground utility information to the major utility companies like Terasen Gas, Shaw

Communications Inc., TELUS and BC Hydro. The membership with ICIS allowed them to cost-effectively stream-line their procedures by providing regular data updates to ICIS only – instead of to each utility company. Now the major utilities, who are also members of ICIS, go directly to the Society to access Surrey's GIS data. The solution is more efficient for both Surrey and the utility companies.



*"Membership with ICIS has allowed the GIS Section of Surrey to work more effectively. It just makes good business sense to collaborate. The sharing of data fosters economic activity, improves the implementation of information technology standards and facilitates better decision-making because of improved access to the most up-to-date data," states Sean Simpson, GIS Manager.*