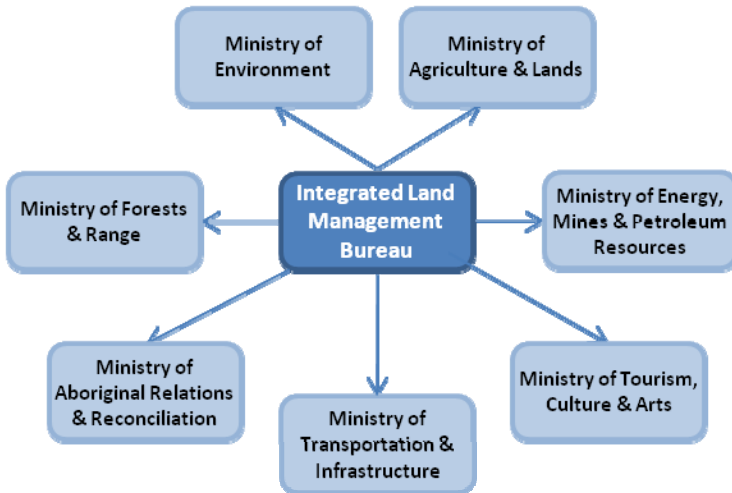


## ICIS FILLS CRITICAL ROLE IN 2010 TIGER TEAM

The Integrated Land Management Bureau (ILMB) is part of British Columbia's Ministry of Forests and Range. The Bureau's mandate is to provide British Columbians with access to integrated Crown land and resource authorizations, planning dispositions and resource information services. Many of these services are provided to or on behalf of provincial natural resource and economy ministries.

ILMB's main shared-service clients include:



ILMB is responsible for integrating, managing and delivering a range of essential services focused on Crown data. The beneficiaries of this information are the province's private, corporate and public citizens.

Some of these services include:

### First Nations Initiatives

- ◆ Supports an enhanced relationship with First Nations which will lead to improved business practices and increased understanding and consideration of their interests by provincial resource agencies. Also supports both a coordinated approach to engaging First Nations on natural resource issues and the pursuit of related strategic agreements.

### Regional Client Services

- ◆ FrontCounter BC - nine locations throughout the province - delivers a wide range of natural resource access and use permits on behalf of client agencies. This one window approach to application referrals, adjudication, and other Crown land and resource

services won the Premier's Award for Cross Government Integration in 2005/06!

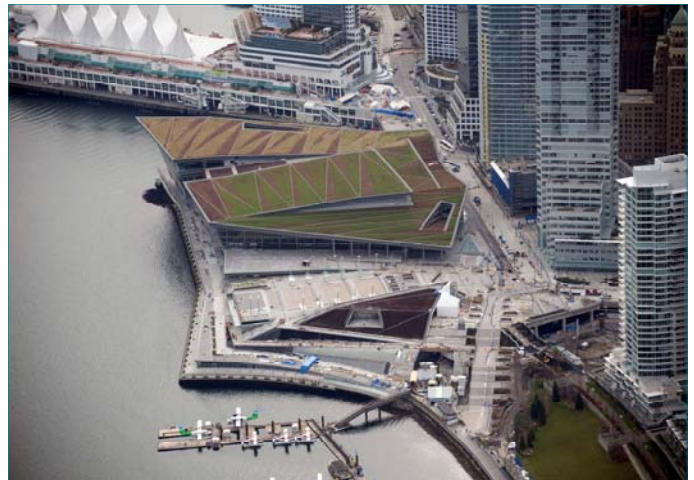
- ◆ Adjudicates Crown land tenures, Crown land partnership and sales, and planning at the strategic level to promote sustainable use of Crown land and resources.

### Business Innovation Office

- ◆ Supports ILMB's project planning through a centralized project management function and provides corporate guidance on the achievement of ILMB's strategic goals.

### GeoBC

- ◆ Integrates, manages and delivers provincial land and resource information on behalf of our client agencies to public, corporate and private citizens.



**Olympic Venue: Vancouver Trade & Convention Center**

GeoBC provides support to a wide variety of internal and external clients and that includes the agencies responsible for emergency response and public safety.

Gurdeep Singh is the Portfolio Manager, Emergency Management and Public Safety for GeoBC. One of the key initiatives as part of the Portfolio includes geospatial support of the 2010 Games.

GeoBC is playing a central coordination role in data acquisition for the 2010 Tiger Team. This multi-jurisdictional team has been assembled to address geospatial requirements for the 2010 Olympics security planning. Tiger Team members include RCMP, Department of National Defense (DND), Emergency Management BC (EMBC), BC Hydro, US National



INTEGRATED  
CADASTRAL  
INFORMATION  
SOCIETY

## MEMBER PROFILE



Geospatial Agency (NGA), GeoBC, City of Vancouver and ICIS, representing its members from local governments and utilities across BC.

Gurdeep is also GeoBC's lead contact on the 2010 Tiger Team and is facilitating GeoBC's central coordination role in spatial data acquisition, sharing, integration, management and stewardship on behalf of the parties by leveraging ILMB services like spatial analysis and mapping, data infrastructure, warehouse information services and base mapping. As part of the process, all data from the provincial government, from local government, private sector and from ICIS will go through GeoBC on its way to RCMP, DND, EMBC and others. This will allow all agencies to work with a single source and achieve a common operational picture related to the geography of the 2010 Olympic venues.



**Olympic Venue: BC Place**

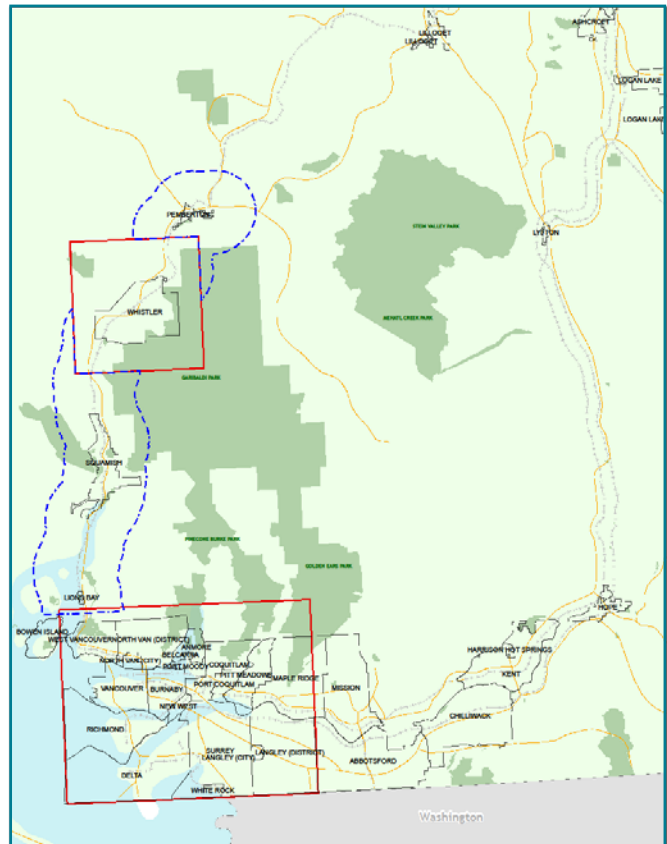
With GeoBC playing a central coordination role in the acquisition of the necessary data, they are charged with negotiating, establishing data exchange and service agreements on behalf of the security partners. With most organizations already members or associate members of ICIS, the challenge of dealing with multiple entities is overcome by leveraging the current ICIS Data Sharing & Licensing Agreements (DSLA) already in place.

"ICIS fills a critical role within the Tiger Team," states Gurdeep Singh. "They were invited to join the team because they have access to and are warehousing many important datasets that are integral to this security initiative."

As an example; the utility infrastructure would have required significant negotiation and sharing agreements with each individual utility by the DND. By becoming an

ICIS associate member and working with ILMB, already an ICIS member, the data can be obtained via ICIS with a single data extract and in accordance with a single DSLA.

### 2010 Olympic Area of Interest



**"ILMB's vision is to deliver corporate solutions through collaboration. The Security 2010 initiative puts those words into action," says Gurdeep Singh. "ICIS shares our vision of success through collaboration and continues to perpetuate its value proposition for new and demanding situations requiring single-source, integrated spatial data."**